



Madeley Cup

DAY 1

Oil Per Board: 40 uL Oil Pattern Distance: 37 Feet Volume Oil Total: 23.24 mL Total Boards Crossed: 581 Boards

Forward Oil Total: 15.8 mL
Forward Boards Crossed: 395 Boards

Reverse Oil Total: 7.44 mL
Reverse Boards Crossed: 186 Boards

	Start	Stop	Loads	Speed	Crossed	Start	End	Feet	T.Oil
1	2L	2R	3	10	111	0.0	2.8	2.8	4.440
2	4L	4R	1	14	33	2.8	4.7	1.9	1320
3	5L	5R	1	14	31	4.7	6.6	1.9	1240
4	7L	7R	2	14	54	6.6	10.5	3.9	2160
5	9L	8R	2	14	48	10.5	14.4	3.9	1920
6	10L	9R	2	14	44	14.4	18.3	3.9	1760
7	11L	10R	2	18	40	18.3	23.4	5.1	1600
8	12L	11R	1	18	18	23.4	25.9	2.5	720
9	13L	12R	1	18	16	25.9	28.4	2.5	640
10	2L	2R	0	22	0	28.4	37.0	8.6	0

Navigation: Forward Reverse More Info

	Start	Stop	Loads	Speed	Crossed	Start	End	Feet	T.Oil
1	2L	2R	0	26	0	37.0	18.0	-19.0	0
2	10L	9R	1	18	22	18.0	15.5	-2.5	880
3	8L	8R	2	14	50	15.5	11.6	-3.9	2000
4	7L	7R	2	14	54	11.6	7.7	-3.9	2160
5	6L	6R	1	14	29	7.7	5.8	-1.9	1160
6	5L	5R	1	10	31	5.8	4.4	-1.4	1240
7	2L	2R	0	10	0	4.4	0.0	-4.4	0

Navigation: Forward Reverse More Info

Report Date

12/1/2008

Conditioner:
Kegel

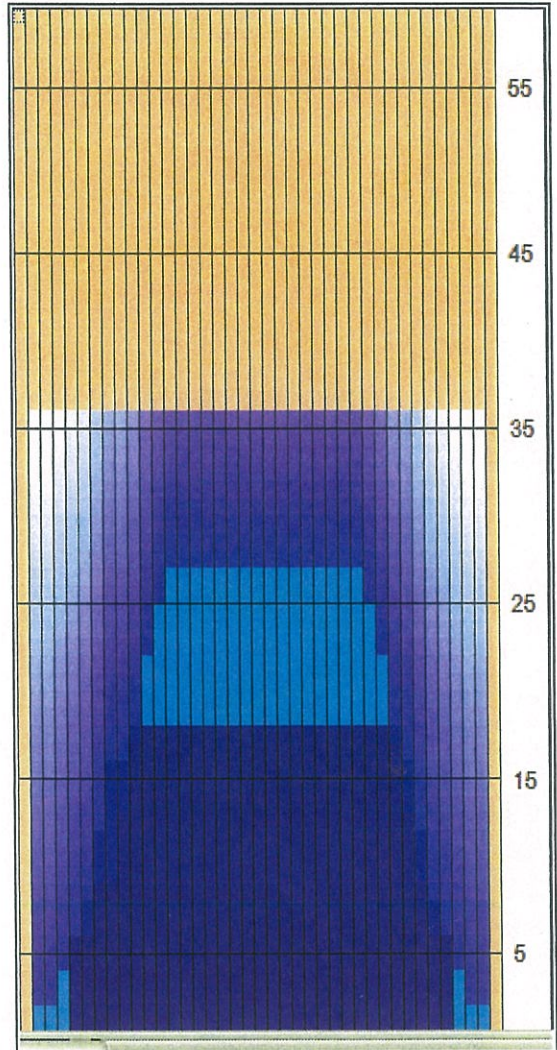
TransferType:
Transfer Roller

Forward Oil

Reverse Oil

Combined Oil

Buff Area

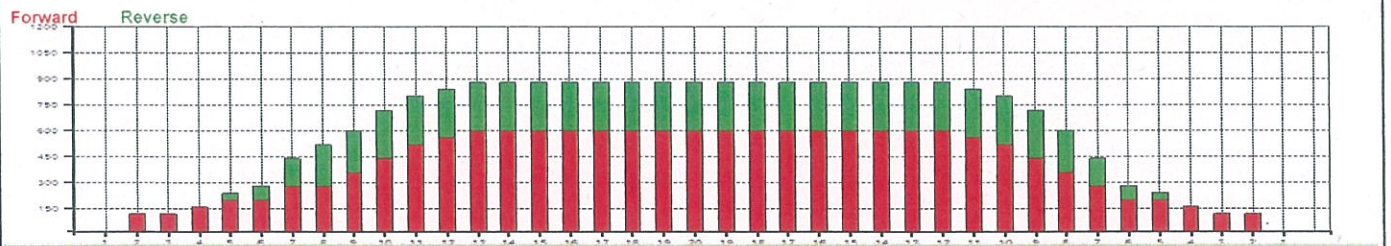


Arrow Zone Ratios

Item	2-5L:16L-20	6-10L:16-20	11-15L:16L-20	16L-20:20-16R	16L-20:20-16R	20-16R:15-11R	20-16R:10-6R	20-16R:5-2R
ul Arrow	160	512	856	880	880	872	568	160
Zone Ratio	5.5	1.72	1.03	1	1	1.01	1.55	5.5

Track Zone Ratios

Item	3L-7L:18L-18R	8L-12L:18L-18R	13L-17L:18L-18R	18L-18R:17R-13R	18L-18R:12R-8R	18L-18R:7R-3R
Description	Outside Track:Middle	Middle Track:Middle	Inside Track:Middle	Middle: Inside Track	Middle:Middle Track	Middle:Outside Track
Track Zone Ratio	3.55	1.26	1	1	1.15	3.55





Madeley Cup

DAY 2

YOUR PINS BEL POSITION

Oil Pattern Distance:	44 Feet	Reverse Brush Drop:	44 Feet	Oil Per Board:	50 uL
Forward Oil Total:	16.65 mL	Reverse Oil Total:	6.95 mL	Volume Oil Total:	23.6 mL
Forward Boards Crossed:	333 Boards	Reverse Boards Crossed:	139 Boards	Total Boards Crossed:	472 Boards

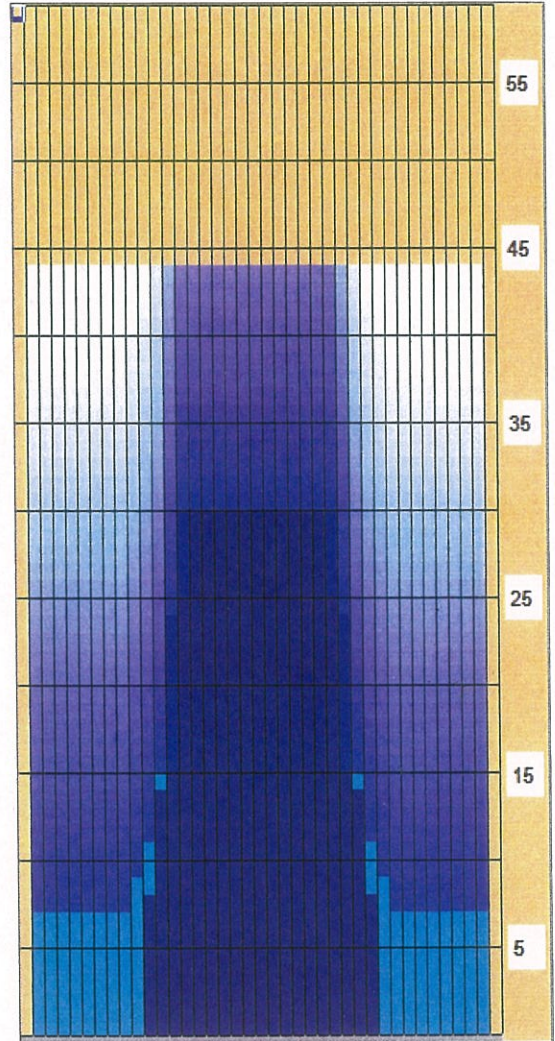
	Start	Stop	Loads	Speed	Crossed	Start	End	Feet	T.Oil
1	2L	2R	5	14	185	0.0	7.9	7.9	9250
2	10L	10R	1	14	21	7.9	9.8	1.9	1050
3	11L	11R	1	14	19	9.8	11.7	1.9	950
4	12L	12R	2	14	34	11.7	15.6	3.9	1700
6	14L	14R	4	18	52	15.6	25.8	10.2	2600
6	15L	15R	2	18	22	25.8	30.9	5.1	1100
7	2L	2R	0	26	0	30.9	44.0	13.1	0

Conditioner:
Type In or Select One

TransferType:
Type In or Select One

Forward
Reverse
Combined
Buff

	Start	Stop	Loads	Speed	Crossed	Start	End	Feet	T.Oil
1	2L	2R	0	30	0	44.0	30.0	-14.0	0
2	14L	14R	2	22	26	30.0	23.8	-6.2	1300
3	13L	13R	4	18	60	23.8	13.6	-10.2	3000
4	12L	12R	2	18	34	13.6	8.5	-5.1	1700
6	11L	11R	1	18	19	8.5	6.0	-2.5	950
6	2L	2R	0	14	0	6.0	0.0	-6.0	0



Item	3L-7L:18L-18R	8L-12L:18L-18R	13L-17L:18L-18R	18L-18R:17R-13R	18L-18R:12R-8R	18L-18R:7R-3R
Description	Outside Track:Middle	Middle Track:Middle	Inside Track:Middle	Middle:Inside Track	Middle:Middle Track	Middle:Outside Track
Track Zone Ratio	4.8	3.33	1.09	1.09	3.33	4.8

