

# NCT Senior Cup Pattern 1



**Oil Pattern Distance:** 39 Feet      **Reverse Brush Drop:** 39 Feet      **Oil Per Board:** 50 uL  
**Forward Oil Total:** 15.2 mL      **Reverse Oil Total:** 9.2 mL      **Volume Oil Total:** 24.4 mL  
**Forward Boards Crossed:** 304 Boards      **Reverse Boards Crossed:** 184 Boards      **Total Boards Crossed:** 488 Boards

	Start	Stop	Loads	Speed	Crossed	Start	End	Feet	T.Oil
1	2L	2R	4	14	148	0.0	5.9	5.9	7400
2	4L	4R	1	18	33	5.9	8.4	2.5	1650
3	6L	5R	1	18	30	8.4	10.9	2.5	1500
4	7L	7R	1	22	27	10.9	14.0	3.1	1350
5	8L	8R	1	22	25	14.0	17.1	3.1	1250
6	10L	9R	1	22	22	17.1	20.2	3.1	1100
7	11L	11R	1	26	19	20.2	23.8	3.6	950
8	2L	2R	0	26	0	23.8	39.0	15.2	0

Navigation: Forward Reverse More

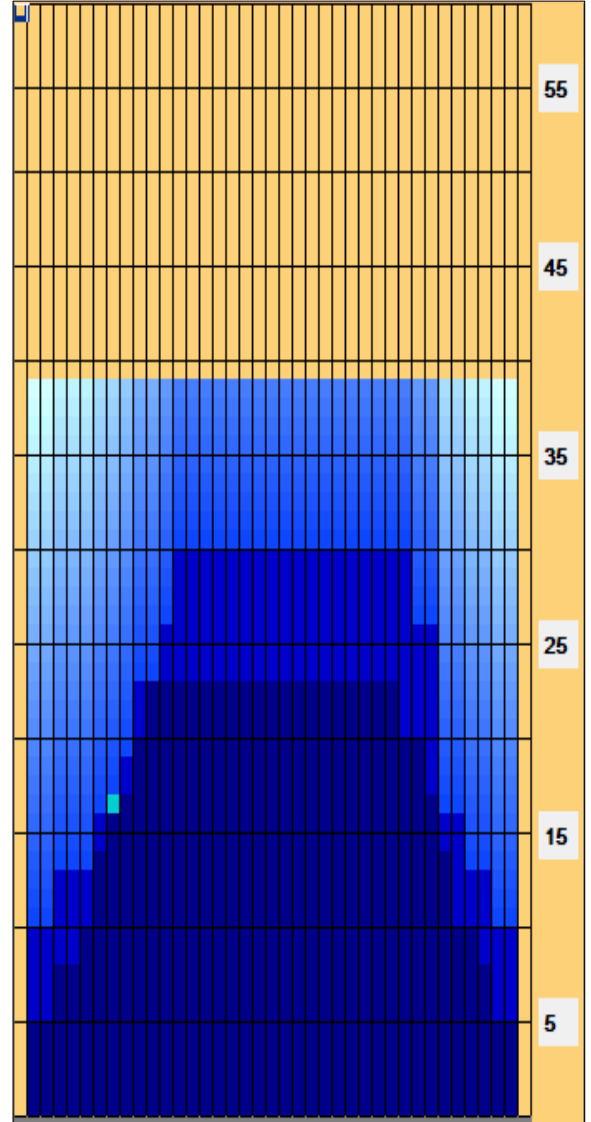
	Start	Stop	Loads	Speed	Crossed	Start	End	Feet	T.Oil
1	2L	2R	0	26	0	39.0	30.0	-9.0	0
2	13L	10R	1	26	18	30.0	26.4	-3.6	900
3	12L	8R	1	26	21	26.4	22.8	-3.6	1050
4	10L	8R	1	26	23	22.8	19.2	-3.6	1150
5	9L	8R	1	22	24	19.2	16.1	-3.1	1200
6	7L	6R	1	22	28	16.1	13.0	-3.1	1400
7	4L	4R	1	18	33	13.0	10.5	-2.5	1650
8	2L	2R	1	14	37	10.5	8.6	-1.9	1850
9	2L	2R	0	10	0	8.6	0.0	-8.6	0

Navigation: Forward Reverse More

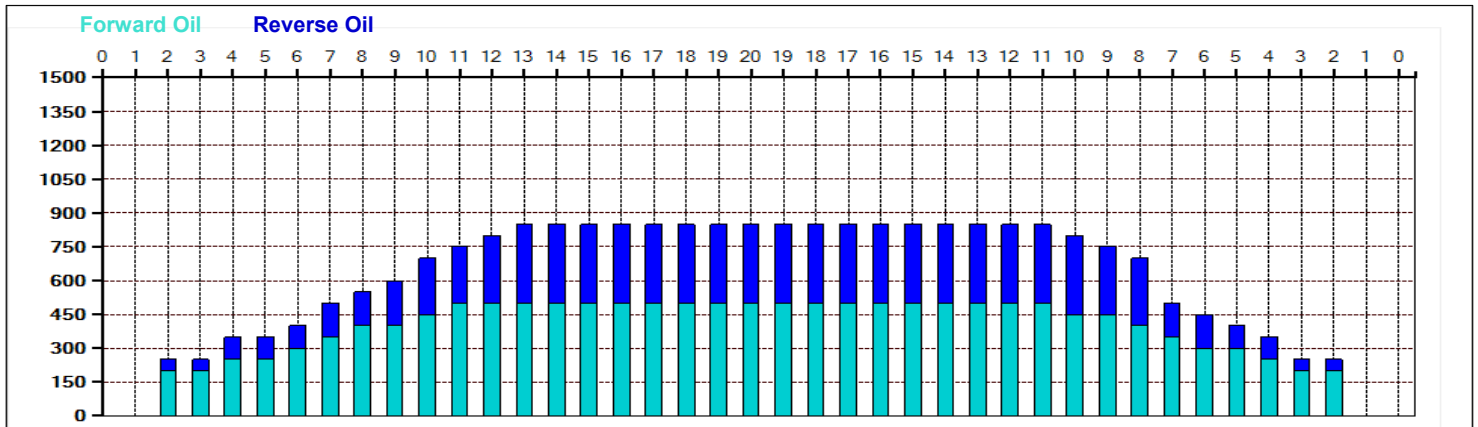
Conditioner:  
Type In or Select One

TransferType:  
Type In or Select One

- Forward
- Reverse
- Combined
- Buff



Item	3L-7L:18L-18R	8L-12L:18L-18R	13L-17L:18L-18R	18L-18R:17R-13R	18L-18R:12R-8R	18L-18R:7R-3R
Description	Outside Track:Middle	Middle Track:Middle	Inside Track:Middle	Middle: Inside Track	Middle:Middle Track	Middle:Outside Track
Track Zone Ratio	2.3	1.25	1	1	1.08	2.18



# NCT Senior Cup Pattern 1



---

<b>Oil Pattern Distance:</b>	<b>39 Feet</b>	<b>Reverse Brush Drop:</b>	<b>39 Feet</b>	<b>Oil Per Board:</b>	<b>50 uL</b>
<b>Forward Oil Total:</b>	<b>15.2 mL</b>	<b>Reverse Oil Total:</b>	<b>9.2 mL</b>	<b>Volume Oil Total:</b>	<b>24.4 mL</b>
<b>Forward Boards Crossed:</b>	<b>304 Boards</b>	<b>Reverse Boards Crossed:</b>	<b>184 Boards</b>	<b>Total Boards Crossed:</b>	<b>488 Boards</b>

---