

Senior Cup 2018 - Medium



Oil Pattern Distance: 40 Feet **Reverse Brush Drop:** 40 Feet **Oil Per Board:** 50 uL
Forward Oil Total: 17.15 mL **Reverse Oil Total:** 8.8 mL **Volume Oil Total:** 25.95 mL
Forward Boards Crossed: 343 Boards **Reverse Boards Crossed:** 176 Boards **Total Boards Crossed:** 519 Boards

	Start	Stop	Loads	Speed	Crossed	Start	End	Feet	T.Oil
1	2L	2R	3	14	111	0.0	3.9	3.9	5550
2	8L	8R	1	14	25	3.9	5.8	1.9	1250
3	9L	9R	3	14	69	5.8	11.7	5.9	3450
4	11L	11R	3	14	57	11.7	17.6	5.9	2850
5	12L	12R	3	14	51	17.6	23.5	5.9	2550
6	13L	13R	2	14	30	23.5	27.4	3.9	1500
7	2L	2R	0	18	0	27.4	34.0	6.6	0
8	2L	2R	0	22	0	34.0	40.0	6.0	0

Navigation: Forward Reverse More

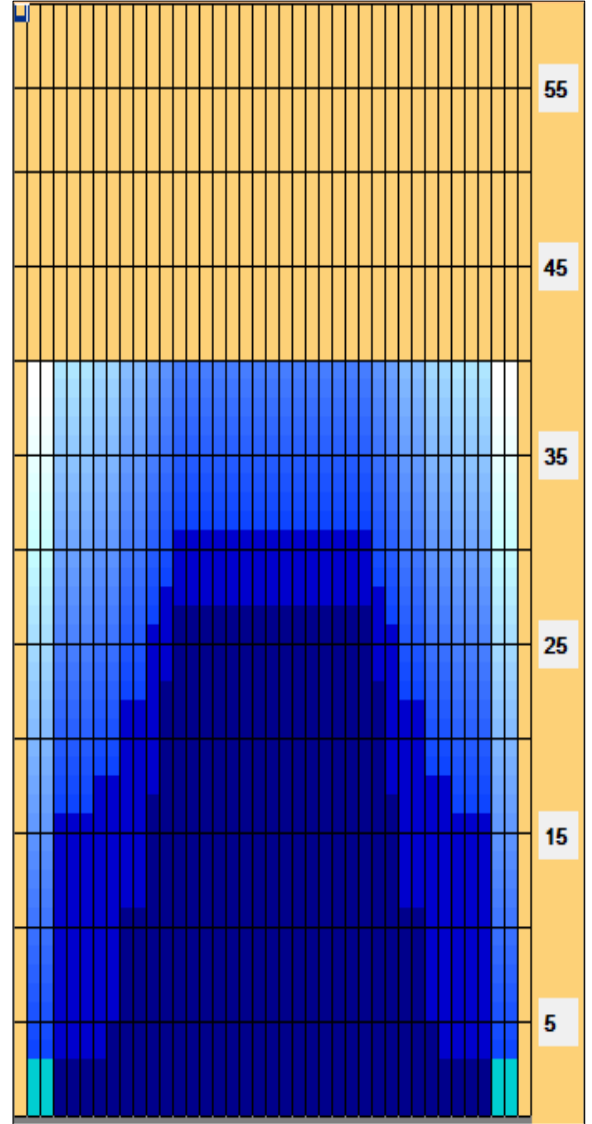
	Start	Stop	Loads	Speed	Crossed	Start	End	Feet	T.Oil
1	2L	2R	0	30	0	40.0	31.0	-9.0	0
2	13L	13R	1	18	15	31.0	28.5	-2.5	750
3	12L	12R	1	18	17	28.5	26.0	-2.5	850
4	11L	11R	2	14	38	26.0	22.1	-3.9	1900
5	9L	9R	2	14	46	22.1	18.2	-3.9	2300
6	7L	7R	1	14	27	18.2	16.3	-1.9	1350
7	4L	4R	1	10	33	16.3	14.9	-1.4	1650
8	2L	2R	0	10	0	14.9	0.0	-14.9	0

Navigation: Forward Reverse More

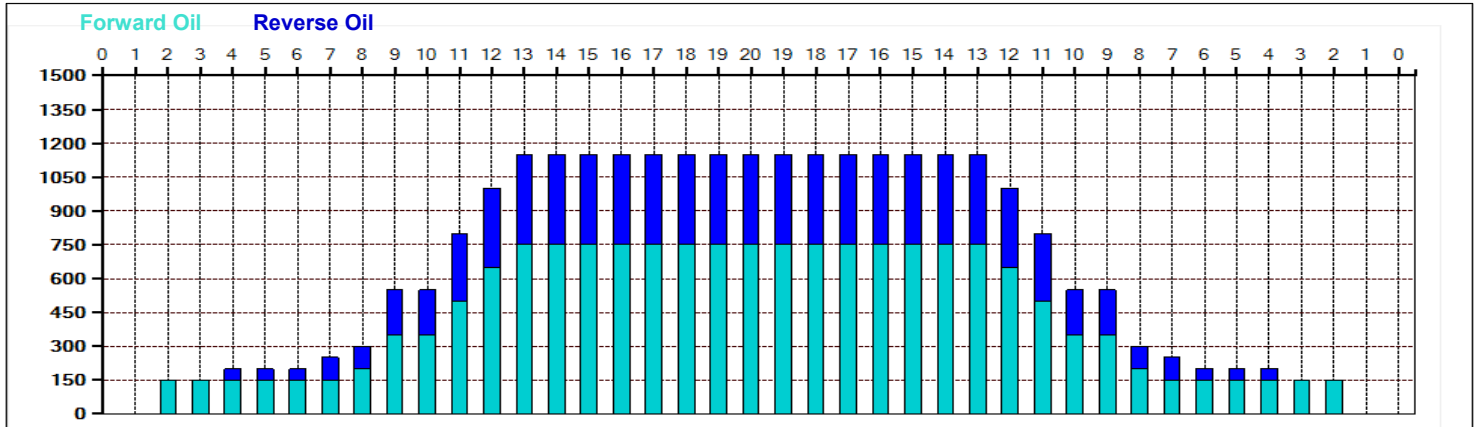
Conditioner:
Type In or Select One

TransferType:
Type In or Select One

- Forward
- Reverse
- Combined
- Buff



Item	3L-7L:18L-18R	8L-12L:18L-18R	13L-17L:18L-18R	18L-18R:17R-13R	18L-18R:12R-8R	18L-18R:7R-3R
Description	Outside Track:Middle	Middle Track:Middle	Inside Track:Middle	Middle: Inside Track	Middle:Middle Track	Middle:Outside Track
Track Zone Ratio	5.75	1.8	1	1	1.8	5.75



Senior Cup 2018 - Medium



Oil Pattern Distance:	40 Feet	Reverse Brush Drop:	40 Feet	Oil Per Board:	50 uL
Forward Oil Total:	17.15 mL	Reverse Oil Total:	8.8 mL	Volume Oil Total:	25.95 mL
Forward Boards Crossed:	343 Boards	Reverse Boards Crossed:	176 Boards	Total Boards Crossed:	519 Boards
